



Weeks 21-22: May 18 – 31, 2014



Summary

The Florida Department of Health (FDOH) uses many different surveillance systems to measure influenza activity. A summary of all these systems can be found on our website at <http://www.floridahealth.gov/floridaflu>

Middle East Respiratory Syndrome (MERS):

- In weeks 18, and 19, respectively, the first and second cases of MERS were identified in Indiana and Florida travelers returning from the Middle East. More information can be found here: <http://www.fhealth.gov/mers> and here: <http://www.cdc.gov/CORONAVIRUS/MERS/INDEX.HTML>.
- There is no evidence that the Indiana and Florida cases are epidemiologically linked to one another. There is no evidence of sustained community wide transmission of MERS. The MERS situation in the United States represents a very low risk to the general public in this country.

National Influenza:

- **Influenza activity continues to decline nationally. In certain parts of the country, activity remains elevated.**
- **The predominant circulating strain this year continues to be influenza A (2009 H1N1).**
- The Centers for Disease Control and Prevention continue to recommend vaccination as long as influenza viruses are circulating.

State Influenza:

Influenza virus is circulating at low levels in Florida, which is typical for this time of year.

- **Emergency department (ED) and urgent care center (UCC) influenza-like illness (ILI) visits have decreased in recent weeks;** current data suggest that the influenza season has peaked.
 - While activity statewide is generally decreasing, those at high risk for infection, such as pregnant women, are among those presenting to EDs and UCCs for care.
- In weeks 21 and 22, fifty specimens were submitted for influenza testing at the Bureau of Public Health Laboratories (BPHL). Ten specimens tested PCR positive: one for influenza A (H3) and nine for influenza B.
 - Nationally (including Florida), almost all circulating influenza is a good match for the vaccine.
- **In week 21, the preliminary estimated number of deaths due to pneumonia or influenza in Florida is lower than the seasonal baseline, based on previous years' data.** Estimated deaths due to pneumonia and influenza are identified using preliminary death certificate data viewed in ESSENCE-FL.

June 4, 2014

Posted on the Bureau of Epidemiology website:
<http://www.floridahealth.gov/floridaflu>

Produced by: Bureau of Epidemiology, Florida Department of Health

Contributors: Heather Rubino, PhD; Yngrid Padilla, MPH; Leah Eisenstein, MPH; Lea Heberlein-Larson, MPH; Valerie Mock; Janet Hamilton, MPH

In this Issue:

Summary	1
NREVSS Respiratory Virus Surveillance	1
ESSENCE-FL Syndromic Surveillance Summary	2
ESSENCE-FL Pneumonia and Influenza Mortality	2
Influenza and ILI Outbreaks	2

TABLE 1: Summary of Florida ILI Activity for Week 22

Measure	Difference from previous week	Current week 22	Previous week 21
Percent of total visits to participating outpatient ILINet providers for ILI	▼0.1	1.0%	1.1%
Percent of emergency department and urgent care center visits (from ESSENCE-FL) due to ILI	▼0.1	2.0%	2.1%
Number of laboratory specimens that were positive for influenza (out of total number tested)	▼6	2 (of 18)	8 (of 22)
Number of ILI outbreaks reported in EpiCom	No Change	0	0

NREVSS Respiratory Virus Surveillance

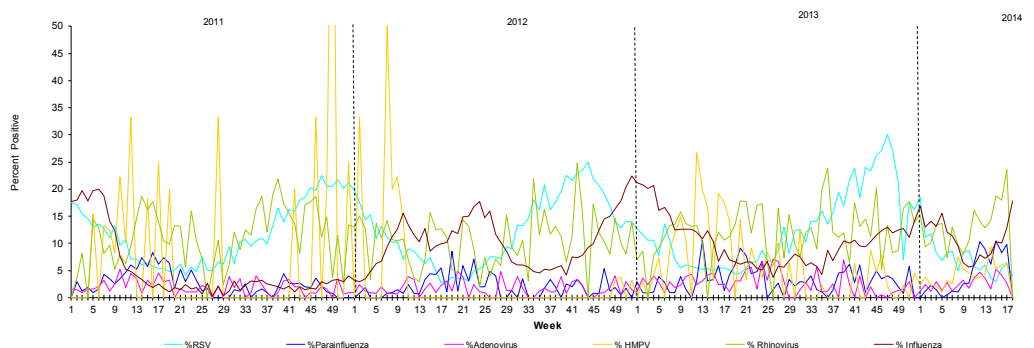
The National Respiratory and Enteric Virus Surveillance System (NREVSS) collects data from laboratories around the country on a weekly basis. NREVSS monitors temporal and geographic patterns of six common respiratory viruses. Eight Florida facilities reported in week 22.

FIGURE 1 shows the percentage of positive tests for six respiratory viruses reported by NREVSS-participating

The six respiratory viruses summarized in Figure 1 are:

- RSV
- Parainfluenza 1-3
- Adenovirus
- Human Metapneumo Virus (HMPV)
- Rhinovirus
- Influenza

FIGURE 1: Percentage of Positive Respiratory Virus Tests as Collected by NREVSS, Florida 2011-2014, as of June 4, 2014

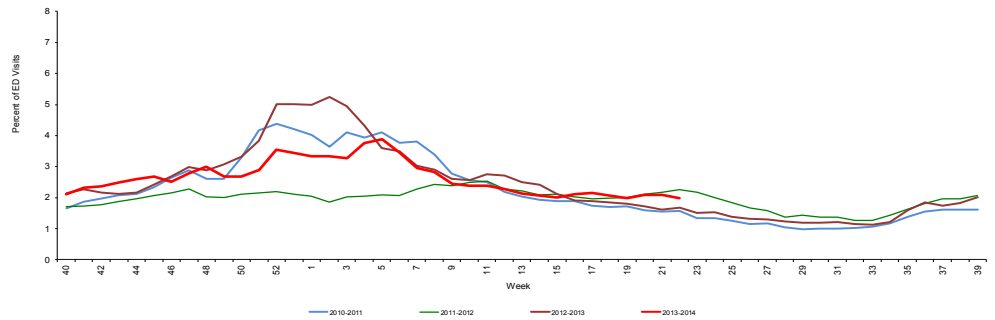


ESSENCE-FL collects data daily from 203 EDs and UCCs. These data are processed into 11 different syndrome categories based on the patient's chief complaint. One of the categories is ILI, which is composed of chief complaints that include the words "influenza" or "flu," or complaints that contain fever plus cough or sore throat.

FIGURE 2 shows ESSENCE-FL data on ILI visits to EDs and UCCs as a percentage of all visits.

Overall activity for ILI reported in ESSENCE-FL is near expected levels for this time of year.

FIGURE 2: Percentage of ILI visits from Emergency Department (ED) and Urgent Care Center (UCC) Chief Complaints, ESSENCE-FL Participating Facilities (N=203), Week 40, 2010 through Week 22 2014 accessed June 3, 2014



ESSENCE-FL Pneumonia and Influenza Mortality

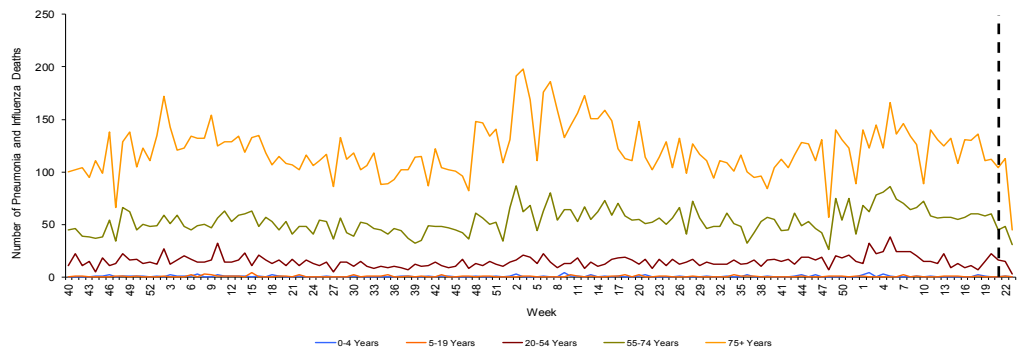
Over the past year, the FDOH Bureau of Vital Statistics and CHDs have been rolling out an electronic death record system for Florida. ESSENCE-FL now displays electronic vital statistics death record data from all 67 Florida counties. For pneumonia and influenza surveillance, death record literals are queried in ESSENCE-FL using a free-text query that searches for references to pneumonia and influenza on death certificates. Any mention of pneumonia or influenza in the death certificate literals, with certain exceptions, is counted as a pneumonia and influenza death. Current season pneumonia and influenza death numbers are preliminary estimates, and may change as more data are received. *The most recent data available are displayed here. ESSENCE-FL vital statistics death records data are currently considered to be complete through week 21, 2014.*

FIGURE 3 shows pneumonia and influenza deaths for all Florida counties by age group, Week 40, 2010 - Week 23, 2014, as reported into ESSENCE-FL.

For week 21 (ending May 31, 2014), there were:

- 160 preliminary estimated pneumonia and influenza deaths reported
- Upper bound of 95% confidence interval for prediction: 205 deaths
- **No excess deaths**

FIGURE 3: Vital Statistics Florida Pneumonia and Influenza Deaths by Age Group, Reported into ESSENCE-FL, Week 40, 2010-Week 23, 2014



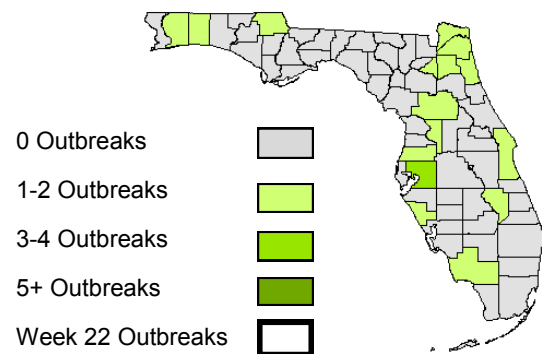
Death records data reported into ESSENCE-FL are currently considered to be complete through week 21, 2014.

Influenza and ILI Outbreaks

TABLE 2 : Summary of Florida ILI Outbreaks by Facility Type, Week 21, 2014-Week 22, 2014

Facility Type	Number of Outbreaks	Implicated Viruses
Total	0	

Map 1: Influenza and ILI outbreaks by County, Week 40, 2014 - Week 22, 2013 as Reported by 9:00 a.m. June 6, 2013



No influenza or ILI outbreaks have been reported into EpiCom since week 21, 2014.