



Florida Arbovirus Surveillance

Week 26: June 24-30, 2018

Arbovirus surveillance in Florida includes endemic mosquito-borne viruses such as West Nile virus (WNV), Eastern equine encephalitis virus (EEEV), and St. Louis encephalitis virus (SLEV), as well as exotic viruses such as dengue virus (DENV), chikungunya virus (CHIKV) and California encephalitis group viruses (CEV). Malaria, a parasitic mosquito-borne disease is also included. During the period of June 24-30, 2018, the following arboviral activity was recorded in Florida.

WNV activity: One asymptomatic blood donor was identified as WNV-positive in Bay County. No horses with WNV infection were reported this week. Two sentinel chickens tested positive for antibodies to WNV this week in Walton County. In 2018, positive samples from one blood donor and thirty sentinel chickens have been reported from seven counties.

SLEV activity: No human cases of SLEV infection were reported this week. No sentinel chickens tested positive for antibodies to SLEV this week. In 2018, there have been no positive samples reported.

EEEV activity: No human cases of EEEV infection were reported this week. Six horses and one donkey with EEEV infection were reported this week in Gilchrist, Marion (3), Okeechobee, and Volusia (2) counties. Six sentinel chickens tested positive for antibodies to EEEV this week in Alachua, Duval, Orange, St. Johns, and Sumter counties. In 2018, positive samples from one human, thirty-five horses, one mule, one donkey, one owl, one emu, four emu flocks, two mosquito pools, and seventy-seven sentinel chickens have been reported from twenty-seven counties.

International Travel-Associated Dengue Fever Cases: No cases of dengue fever were reported this week in persons that had international travel. In 2018, three travel-associated cases have been reported.

Dengue Fever Cases Acquired in Florida: No cases of locally acquired dengue fever were reported this week. In 2018, no cases of locally acquired dengue fever have been reported.

International Travel-Associated Chikungunya Fever Cases: No cases of chikungunya fever were reported this week in persons that had international travel. In 2018, one travel-associated case has been reported.

Chikungunya Fever Cases Acquired in Florida: No cases of locally acquired chikungunya fever were reported this week. In 2018, no cases of locally acquired chikungunya fever have been reported.

International Travel-Associated Zika Fever Cases: One case of Zika fever was reported this week in a person that had international travel. In 2018, 50 cases have been reported.

Zika Fever Cases Acquired in Florida: No cases of locally acquired Zika fever were reported this week. In 2018, no cases of locally acquired Zika fever have been reported.

Advisories/Alerts: Bay, Lake, Marion, Nassau, Okeechobee, St. Johns, Suwannee, Taylor, and Volusia counties are currently under a mosquito-borne illness advisory. Levy County is currently under a mosquito-borne illness alert. No other counties are currently under mosquito-borne illness advisory or alert.

There are no areas of ongoing, active Zika transmission in Florida. For additional information on current CDC recommendations, please visit <https://www.cdc.gov/zika/intheus/florida-update.html>. For additional information on Zika virus cases from 2016 or 2017, including up-to-date numbers, please visit <https://zikafreefl.org/>.

There is a Level 2 (Alert) Travel Health Notice from the CDC for multiple countries in the Caribbean, Central and South America, Mexico, Cape Verde, Southeast Asia, and Pacific Islands related to Zika virus transmission and an association with poor pregnancy outcomes. Pregnant women should consider postponing travel to these areas. There is also a Level 2 Travel Health Notice for Brazil and a Level 1 Travel Health Notice in Nigeria related to the transmission of yellow fever virus. Additional information on travel health notices can be found at the following link: <http://wwwnc.cdc.gov/travel/notices>. For a map of arboviral disease activity in the United States, please visit the following link: https://www.cdc.gov/arbovet/maps/ADB_Diseases_Map/index.html.

2018 Human Case Summary*

West Nile Virus Illnesses Acquired in Florida: One asymptomatic positive blood donor has been reported in 2018 from Bay County (June).

EEEV Infection Acquired in Florida: One human case of Eastern equine encephalitis acquired in Florida has been reported in 2018 in Taylor County (May).

International Travel-Associated Chikungunya Fever Cases: One case of chikungunya fever with onset in 2018 has been reported in an individual with travel history to a chikungunya endemic country in the two weeks prior to onset. Country of origin was: Brazil. County reporting the case was: Orange.

International Travel-Associated Dengue Fever Cases: Three cases of dengue fever with onset in 2018 have been reported in individuals with travel history to a dengue endemic country in the two weeks prior to onset. Countries of origin were: Cuba and Haiti (2). Counties reporting cases were: Broward, Lake, and Miami-Dade. In 2018, three cases of dengue reported in Florida have been serotyped by PCR. Additional serotyping and strain typing are being conducted.

	# of cases per serotype – 2018
DENV-1	2
DENV-2	1
Total	3

International Travel-Associated Zika Fever Cases: In 2018, fifty cases of Zika fever have been reported in individuals with travel history to a country or area experiencing Zika virus activity. Countries of origin were: Brazil (3), Brazil/Haiti, Brazil/Mexico, Cuba (11), Cuba/Mexico, Dominica, Guatemala, Haiti (17), Honduras (4), Jamaica, Puerto Rico, and Venezuela (8). Counties reporting cases were: Broward (3), Collier (18), Hernando, Lee, Miami-Dade (12), Orange (9), Osceola (3), Palm Beach (2), and Walton. Seven cases were reported in non-Florida residents. Florida is monitoring a total of 36 pregnant women in 2018.

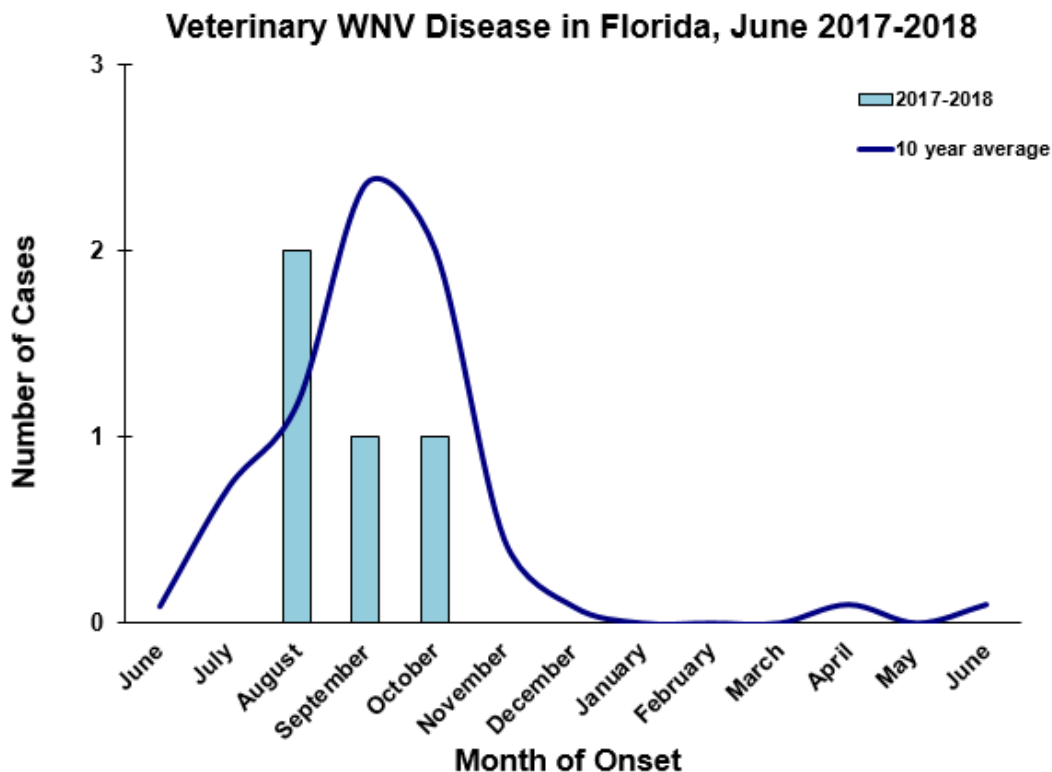
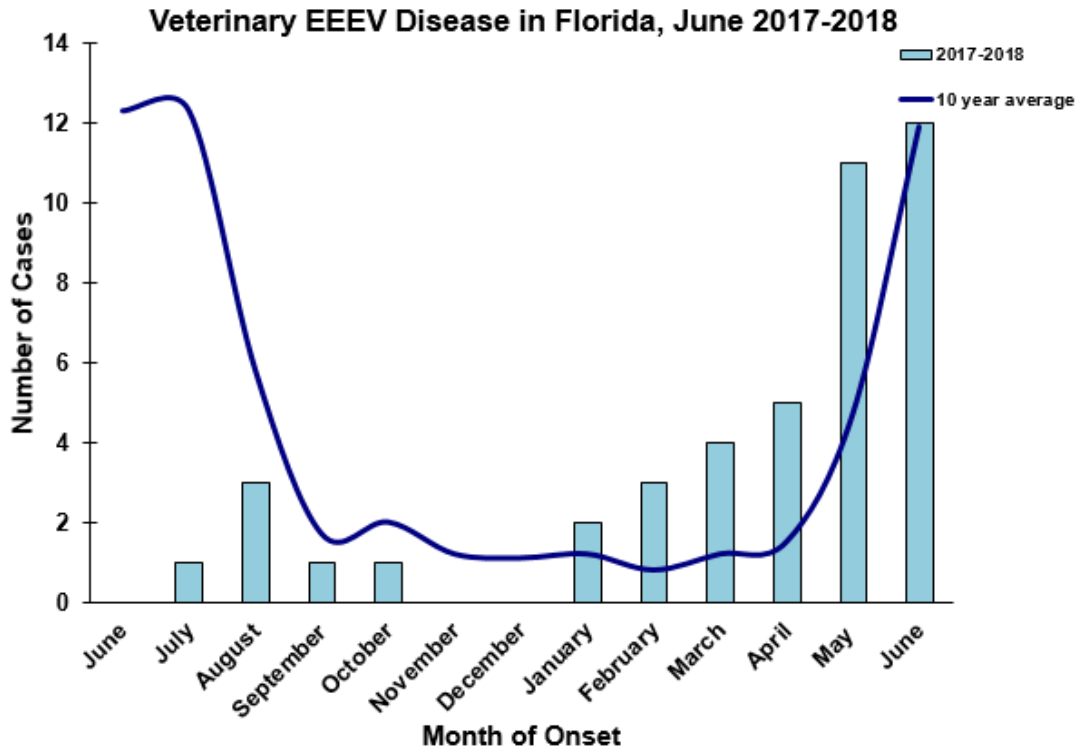
International Travel-Associated Malaria Cases: Twenty-nine cases of malaria with onset in 2018 have been reported. Countries of origin were: Afghanistan, Angola, Brazil, Cameroon, Ethiopia, Ghana, Haiti (2), India (3), Kenya, Liberia, Nicaragua (3), Nigeria (10), Sierra Leone, and Togo (2). Counties reporting cases were: Broward (8), Duval (2), Hillsborough (4), Miami-Dade (9), Okaloosa, Orange, Palm Beach, Polk, and Seminole (2). Four cases were reported in non-Florida residents.

Nineteen cases (66%) were diagnosed with *Plasmodium falciparum*. Nine cases (31%) were diagnosed with *Plasmodium vivax*. One case (3%) was diagnosed with *Plasmodium ovale*.

Veterinary Cases*

*Veterinary cases are reported by date of onset. Only mammalian veterinary cases are included in the graphs.

Six horses and one donkey with EEEV infection were reported this week in Gilchrist, Marion (3), Okeechobee, and Volusia (2) counties.



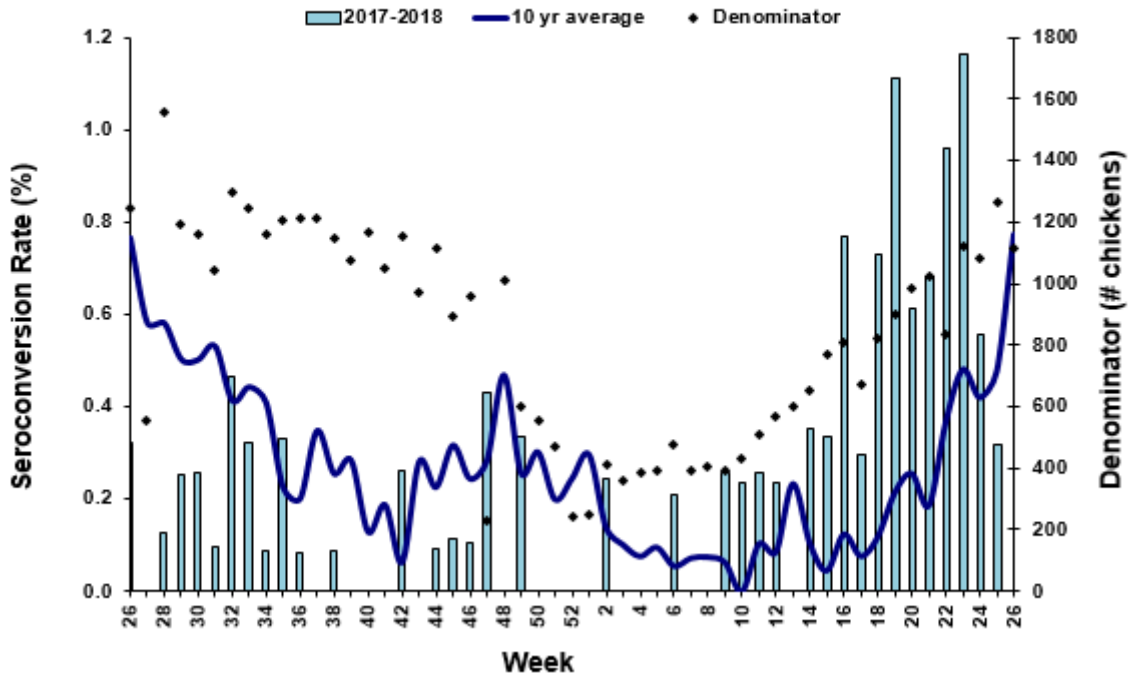
Sentinel Chickens*

The table below is for the reporting of confirmatory laboratory results from this week. Some of the samples were collected at earlier dates. The date of collection is recorded for samples collected on that day along with the total number of positives and the corresponding seroconversion rate for the week the sample was collected.

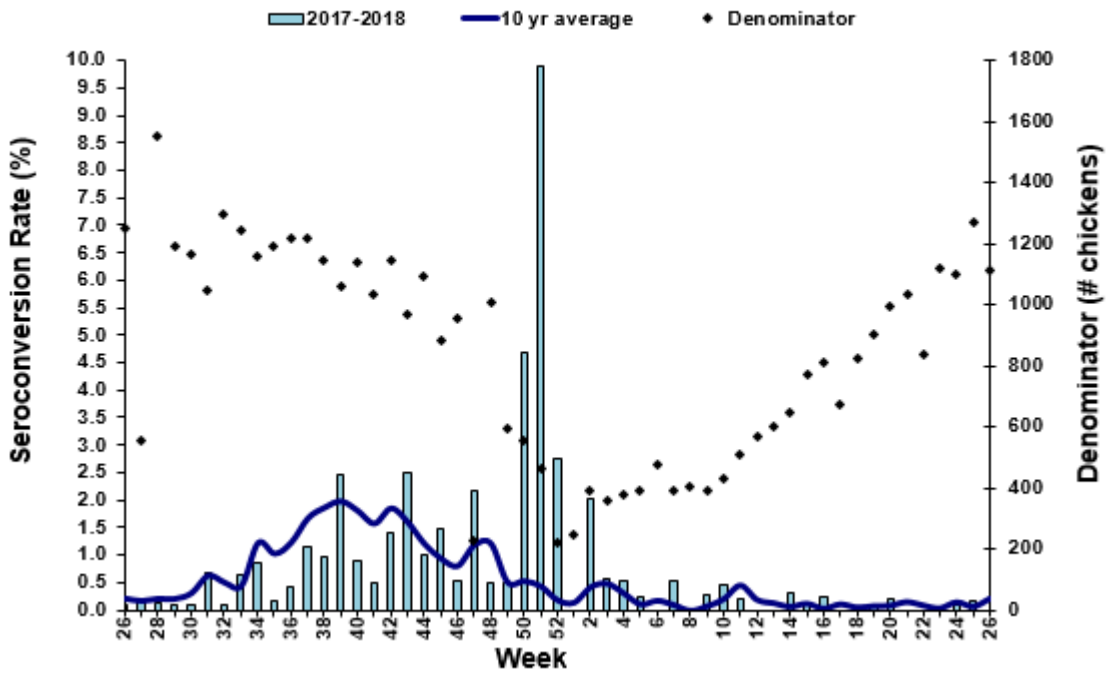
Two sentinel chickens tested positive for antibodies to WNV this week in Walton County. Six sentinel chickens tested positive for antibodies to EEEV this week in Alachua, Duval, Orange, St. Johns, and Sumter counties.

County	Collection Date	Seroconversion Rates (%)					County Totals		
		Flavi	SLEV	WNV	Alpha	EEEV	HJV	Collection Week	YTD
Alachua	6/19/18				5.56	5.56		1 EEEV	6 EEEV
Duval	6/18/18				3.45	3.45		1 EEEV	2 EEEV
Orange	6/14/18				0.92	0.92		1 EEEV	1 WNV, 7 EEEV
St. Johns	6/18/18				3.70	3.70		2 EEEV	31 EEEV
Sumter	6/12/18				2.78	2.78		1 EEEV	1 EEEV
Walton	6/18/18	1.55		1.55				2 WNV	10 WNV, 9 EEEV

Sentinel Seroconversions to EEEV in Florida, 2017-2018



Sentinel Seroconversions to WNV in Florida, 2017-2018



* Please note that a change in testing procedure starting on week 50 of 2017 resulted in an artificial spike in positive test results that cannot be directly compared with past results.

Mosquito Pools

No mosquito pools tested positive for EEEV, WNV, or Zika virus this week.

County	Collection Date	Result	Species	County YTD

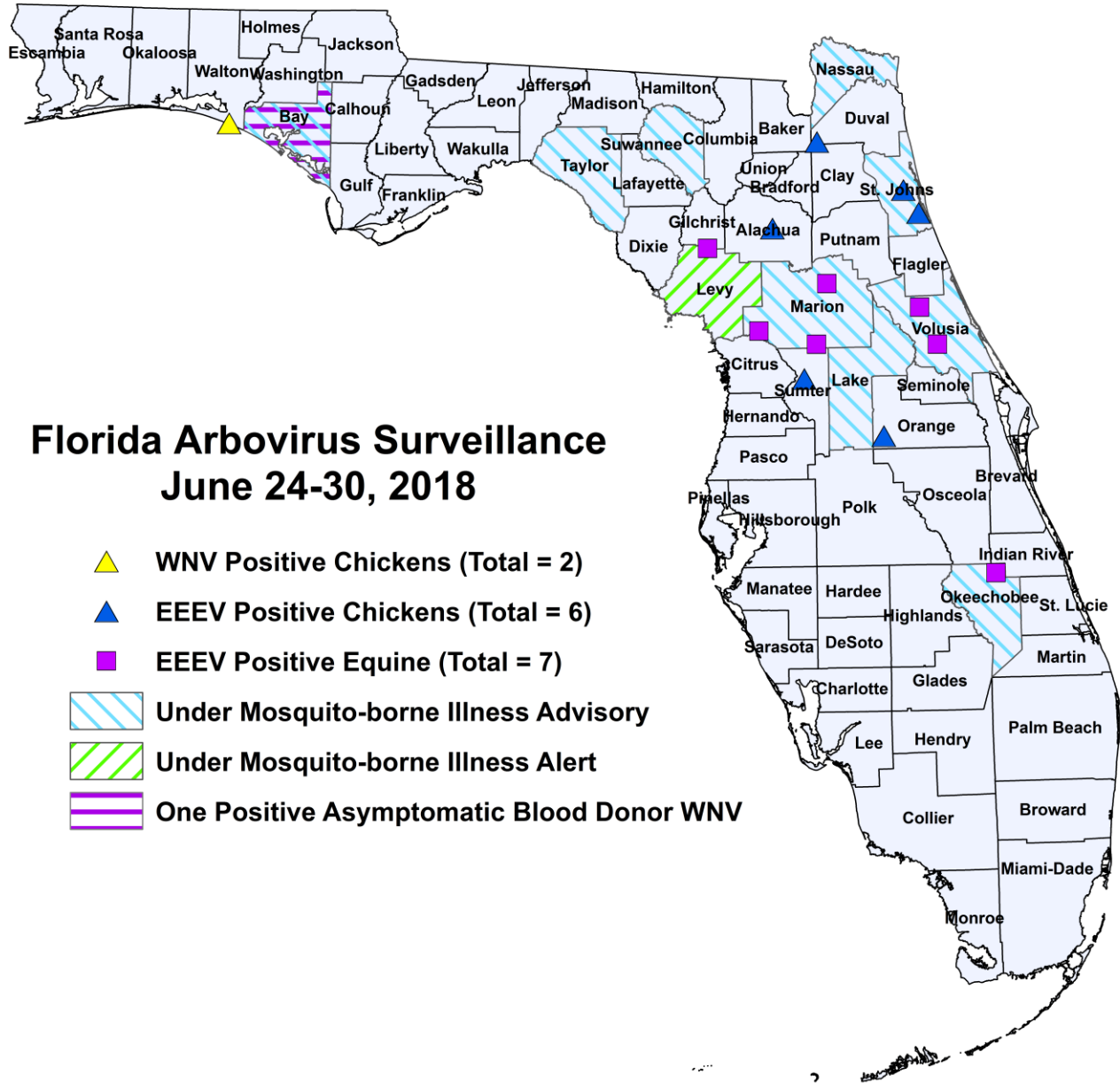
Dead Birds

The Fish and Wildlife Conservation Commission (FWC) collects reports of dead birds, which can be an indication of arbovirus circulation in an area. This week, four reports representing a total of 15 dead birds, including two crows and one dove, were received from three counties.



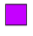


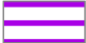
In 2018, 273 reports representing a total of 706 dead birds (16 crows, 19 jays, 56 raptors, 6 doves) were received from 41 of Florida's 67 counties. Please note that FWC collects reports of birds that have died from a variety of causes, not only arboviruses. Dead birds should be reported to www.myfwc.com/bird/.

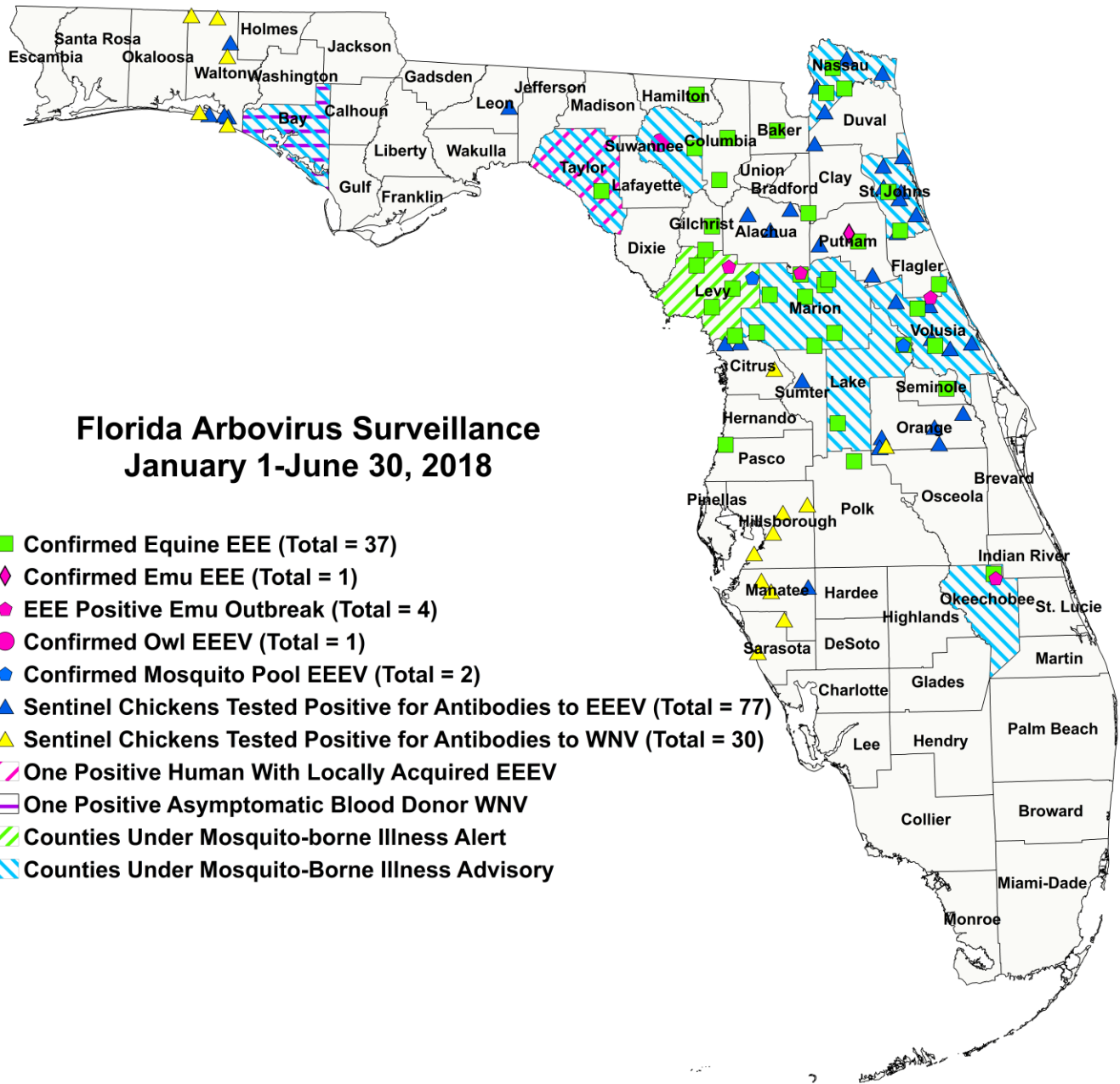
2018

County	Total Dead Birds	Crows	Jays	Raptors	Dove
Bay	1	0	0	0	1
Hillsborough	12	0	0	0	0
Volusia	2	2	0	0	0



**Florida Arbovirus Surveillance
June 24-30, 2018**

-  **WNV Positive Chickens (Total = 2)**
-  **EEEV Positive Chickens (Total = 6)**
-  **EEEV Positive Equine (Total = 7)**
-  **Under Mosquito-borne Illness Advisory**
-  **Under Mosquito-borne Illness Alert**
-  **One Positive Asymptomatic Blood Donor WNV**



Florida Arbovirus Surveillance January 1-June 30, 2018

- Confirmed Equine EEE (Total = 37)
- ◆ Confirmed Emu EEE (Total = 1)
- ◆ EEE Positive Emu Outbreak (Total = 4)
- Confirmed Owl EEEV (Total = 1)
- ▲ Confirmed Mosquito Pool EEEV (Total = 2)
- ▲ Sentinel Chickens Tested Positive for Antibodies to EEEV (Total = 77)
- ▲ Sentinel Chickens Tested Positive for Antibodies to WNV (Total = 30)
- ▨ One Positive Human With Locally Acquired EEEV
- ▨ One Positive Asymptomatic Blood Donor WNV
- ▨ Counties Under Mosquito-borne Illness Alert
- ▨ Counties Under Mosquito-Borne Illness Advisory

2018 Arbovirus Activity by County	
County	Arbovirus Activity
Alachua	EEEV: 6 sentinels (5/15, 5/22, 6/5, 6/19)
Baker	EEEV: 1 horse (3/11)
Bay	WNV: 1 asymptomatic blood donor (June)
Bradford	EEEV: 1 horse (6/8)
Citrus	WNV: 1 sentinel (4/17) EEEV: 3 sentinels (1/8, 4/30, 5/7)
Columbia	EEEV: 2 horses (3/5, 5/30)
Duval	EEEV: 2 sentinels (6/11, 6/18)
Flagler	EEEV: 1 horse (3/6)
Gilchrist	EEEV: 2 horses (5/4, 6/11)
Hamilton	EEEV: 1 horse (4/3)
Hillsborough	WNV: 9 sentinels (1/10, 1/16, 2/13, 3/6, 3/13, 4/3, 5/15)

Lake	EEEV: 2 horses (5/24, 5/30), 1 mosquito pool (6/13)
Leon	EEEV: 1 sentinel (6/5)
Levy	EEEV: 3 horses (2/24, 3/5, 5/18), 1 mule (4/17), emu flock outbreak (3/2 for first emu), 1 mosquito pool (5/10)
Manatee	WNV: 2 sentinels (1/9, 2/13) EEEV: 1 sentinel (4/10)
Marion	EEEV: 8 horses (2/28, 4/23, 5/3, 5/14, 6/1, 6/12, 6/19, 6/21), 1 emu flock outbreak (5/2 for first emu)
Nassau	EEEV: 4 horses (1/29, 4/30, 5/25, 6/2), 4 sentinels (5/17, 5/25, 5/31, 6/8)
Okeechobee	EEEV: 1 emu flock outbreak (6/3 for first emu), 1 horse (6/17)
Orange	WNV: 1 sentinel (1/10) EEEV: 7 sentinels (2/27, 3/13, 6/5, 6/7, 6/12, 6/14)
Pasco	EEEV: 1 horse (6/10)
Polk	EEEV: 1 horse (2/27)
Putnam	EEEV: 1 horse (4/21), 1 emu (2/13), 2 sentinels (5/30)
Sarasota	WNV: 7 sentinels (1/12, 2/2, 4/2, 4/9, 4/16, 5/11, 5/18)
Seminole	EEEV: 1 horse (5/29)
St. Johns	EEEV: 2 horses (1/9, 5/25), 31 sentinels (4/16, 4/23, 4/30, 5/7, 5/14, 5/21, 5/29, 6/4, 6/18)
Sumter	EEEV: 1 sentinel (6/12)
Suwannee	EEEV: 1 owl (4/6), 1 horse (6/4)
Taylor	EEEV: 1 human (May), 1 horse (5/31)
Volusia	EEEV: 1 emu flock outbreak (5/9 for first emu), 10 sentinels (4/9, 4/16, 4/23, 4/30, 5/7, 5/21), 1 donkey (6/21), 1 horse (6/21)
Walton	WNV: 10 sentinels (1/9, 1/22, 1/23, 2/26, 6/11, 6/18) EEEV: 9 sentinels (2/5, 3/5, 3/19, 4/2, 4/16, 4/30, 5/1, 6/11)

Acknowledgements and Data Sources

Contributors: Andrea Morrison, PhD, MSPH, Dana Giandomenico, MPH, and Danielle Stanek, DVM, DOH Bureau of Epidemiology; Lea Heberlein-Larson, Maribel Castaneda, and Valerie Mock, DOH Bureau of Public Health Laboratories; Carina Blackmore, DVM, PhD, DOH Division of Disease Control and Health Protection.

For more surveillance information, please see the DOH website at: <http://www.floridahealth.gov/diseases-and-conditions/mosquito-borne-diseases/surveillance.html>

For arbovirus surveillance information for the United States, please see the Centers for Disease Control and Prevention website at: <http://www.cdc.gov/ncidod/dybid/westnile/surv&control.htm>

Case tallies included in the weekly Florida arbovirus surveillance report include confirmed and probable cases for EEE, WNV infection, SLE, dengue, chikungunya, and malaria by date of onset. Suspect cases are not included. Activity is mapped by county of exposure rather than county of residence. Case definitions being used in Florida are consistent with national criteria provided by the Council of State and Territorial Epidemiologists (CSTE) and may be viewed at: <http://www.floridahealth.gov/diseases-and-conditions/disease-reporting-and-management/disease-reporting-and-surveillance/index.html>. Case tallies reported by CDC do not include suspect cases and cases are reported by patient state of residence rather than where the exposure occurred. Data is provided by county health departments, Department of Health Bureau of Public Health Laboratories, Department of Agriculture and Consumer Services, mosquito control agencies, Florida Fish and Wildlife Conservation Commission, medical providers and veterinarians. Equine cases are provided by the Department of Agriculture and Consumer Services.