



Florida Arbovirus Surveillance Week 47: November 17-23, 2013

Arbovirus surveillance in Florida includes endemic mosquito-borne viruses such as West Nile virus (WNV), Eastern equine encephalitis virus (EEEV), St. Louis encephalitis virus (SLEV), and Highlands J virus (HJV) and exotic viruses such as dengue virus (DENV) and California encephalitis group viruses (CEV). Malaria, a non-viral mosquito-borne disease is also included. During the period of November 17-23, 2013 the following arboviral activity was recorded in Florida:

WNV activity: No human cases of WNV illness were reported this week. Two horses with WNV infection were reported this week in Pasco and Putnam Counties. Twenty-one sentinel chickens tested positive for antibodies to WNV in Alachua, Citrus, Duval, Flagler, Indian River, Manatee, Nassau, Orange, St. Johns and Walton Counties this week. In 2013, positive samples from four humans, 10 equines, 1 wild bird, 1 alpaca, and 282 sentinel chickens have been received from 26 counties.

EEEV activity: No human cases of EEE were reported this week. One horse with EEEV infection was reported this week in Duval County. Two sentinel chickens tested positive for antibodies to EEEV this week in Hernando and Walton Counties. In 2013, positive samples from two humans, four birds, 37 equines, two deer, and 167 sentinel chickens have been received from 29 counties.

DENV activity: No cases of locally acquired dengue were reported this week. In 2013, a total of 23 cases of locally acquired dengue have been reported in 21 Florida residents and two out-of-state-residents. Exposures occurred in two counties, Martin (22) or Miami-Dade (1).

SLEV activity: Two sentinel chickens tested positive for antibodies to SLEV this week in Hillsborough and Palm Beach Counties. In 2013, 74 positive samples have been received from nine counties.

HJV activity: No sentinel chickens tested positive for antibodies to HJV this week. In 2013, 34 positive samples have been received from 11 counties.

Advisories/Alerts: Alachua, Bradford, Gilchrist, Hillsborough, Levy, Marion, Miami-Dade, Nassau, Putnam, and St. Lucie counties are currently under a mosquito-borne illness advisory. Duval and Martin County are currently under a mosquito-borne illness alert. No other counties are currently under mosquito-borne illness advisory or alert.

2013 Human Case Summary*

WNV infection Acquired in Florida: Four human cases of WNV illness with onset in August (1), September (2) and October (1) have been reported in 2013 in Alachua (1), Duval (2) and Nassau (1) counties. One asymptomatic positive blood donor was identified in August. The donor is a resident of Florida and has outdoor exposure in multiple northeast Florida counties.

EEEV Infection Acquired in Florida: Two human cases of EEE with onset in January (1) and March (1) have been reported in 2013 in Levy (1) and Hillsborough (1) County residents.

Dengue Infection Acquired in Florida: In 2013, a total of 23 cases of locally acquired dengue have been reported.

Twenty-two cases of dengue have been reported as acquired in Martin County with onsets in June (2), July (5), August (14), and September (1) 2013. Of these 22 cases, fifteen are residents of Martin County; four are residents of St. Lucie County; one is a resident of Palm Beach County; and two are out-of-state visitors.

One case of dengue in a Miami-Dade resident with onset in August, 2013 has been reported as acquired in Miami-Dade County.

Imported Dengue: One hundred eight cases of dengue with onset in 2013 have been reported in individuals with travel history to a dengue endemic country in the two weeks prior to onset. Countries of origin were: Angola, Bangladesh (2), Barbados, Bolivia, Brazil (3), the Caribbean, Columbia (5), Costa Rica (4), Cuba (3), Dominica, Dominican Republic (11), Haiti (5), Honduras (3), India, Indonesia, Jamaica (5), Mexico, Nicaragua (2), Nigeria (2), Panama, Philippines (2), Puerto Rico (45), Saint Martin (2), Trinidad and Tobago, Venezuela (3), and U.S. Virgin Islands. Counties reporting cases were: Alachua (2), Brevard, Broward (10), Clay, Duval (3), Hillsborough, Indian River, Lake, Lee, Marion, Miami-Dade (40), Nassau, Orange (17), Osceola (5), Palm Beach (8), Pasco, Pinellas, Polk (2), Santa Rosa, Sarasota (2), Seminole (3), St. Johns, St. Lucie and Volusia (3). Twelve of the cases were reported in non-Florida residents.

In 2013, 78 of the 131 cases of dengue reported in Florida have been serotyped by PCR. Additional serotyping and strain typing are being conducted.

	# of cases per serotype – 2013
DENV-1	55
DENV-2	1
DENV-3	4
DENV-4	18
	78

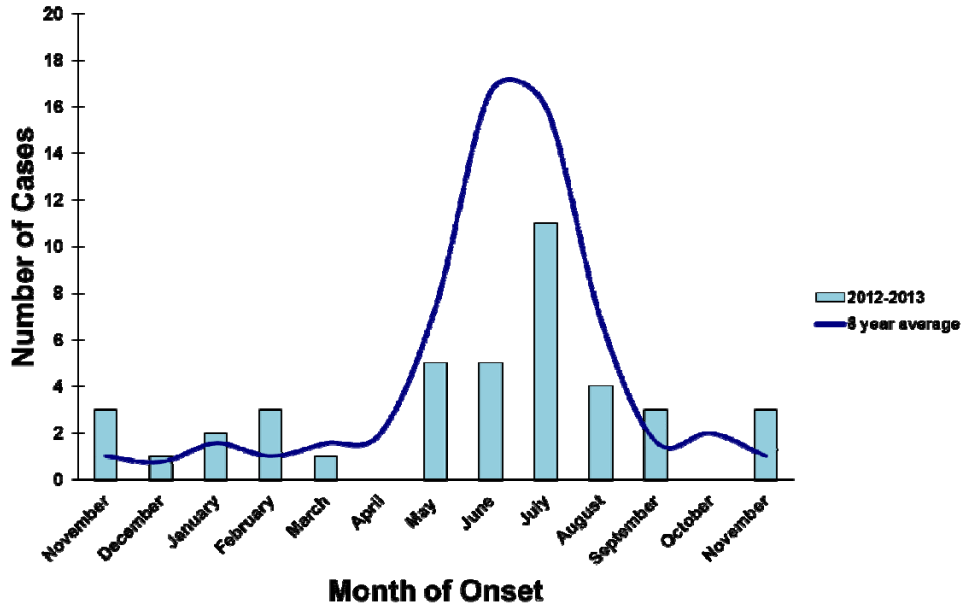
Imported Malaria: Forty-five cases of malaria with onset in 2013 have been reported. Countries of origin were: Benin, Chad (3), Democratic Republic of the Congo, Equatorial Guinea, Ghana (4), Guinea (2), Guyana (6), Haiti (6), India (4), Kenya (2), Liberia, Nigeria (3), Peru, Sierra Leone (2), Solomon Islands, South Sudan, Sudan (2), Uganda (3), and an undetermined African country. Counties reporting cases were: Alachua (2), Broward, Duval (5), Hillsborough (7), Lake, Lee (2), Miami-Dade (9), Orange (8), Osceola (2), Palm Beach (5), Pinellas, and Seminole (2). Two of the cases were reported in non-Florida residents.

Thirty-three cases (73%) were diagnosed with *Plasmodium falciparum*, eight (18%) with *Plasmodium vivax*, three with *Plasmodium ovale* (7%), and one mixed *Plasmodium falciparum*/ *Plasmodium vivax* (2%).

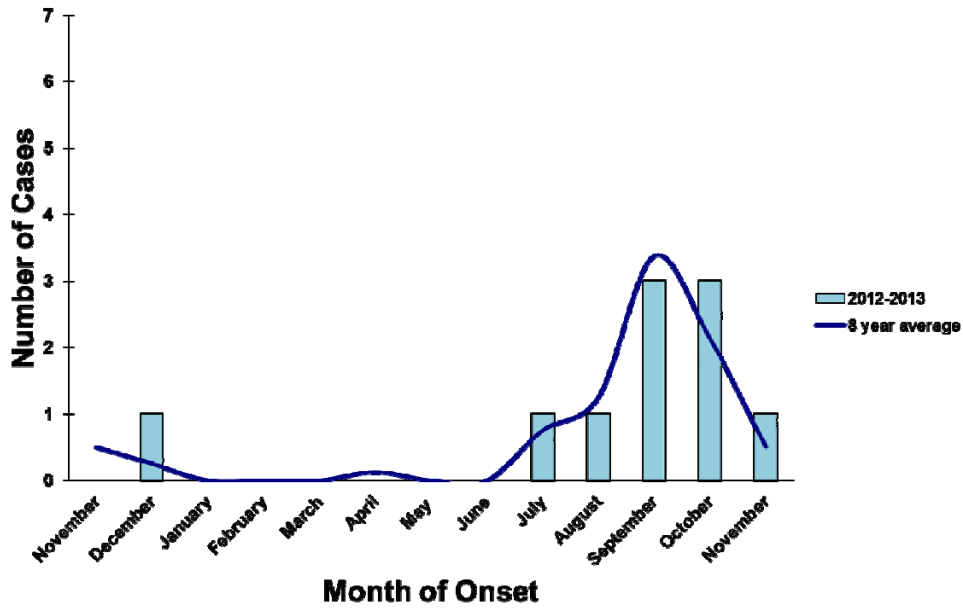
Veterinary Cases*

County	Onset Date	Species	Virus	Status	County YTD
Duval	11/9/13	Equine	EEEV	Euthanized	1 EEEV
Pasco	11/11/13	Equine	WNV	Euthanized	1 EEEV, 1 WNV
Putnam	10/30/13	Equine	WNV	Euthanized	2 EEEV, 1 WNV

Veterinary EEE in Florida, November 2012-2013



Veterinary WNV Disease in Florida, November 2012-2013



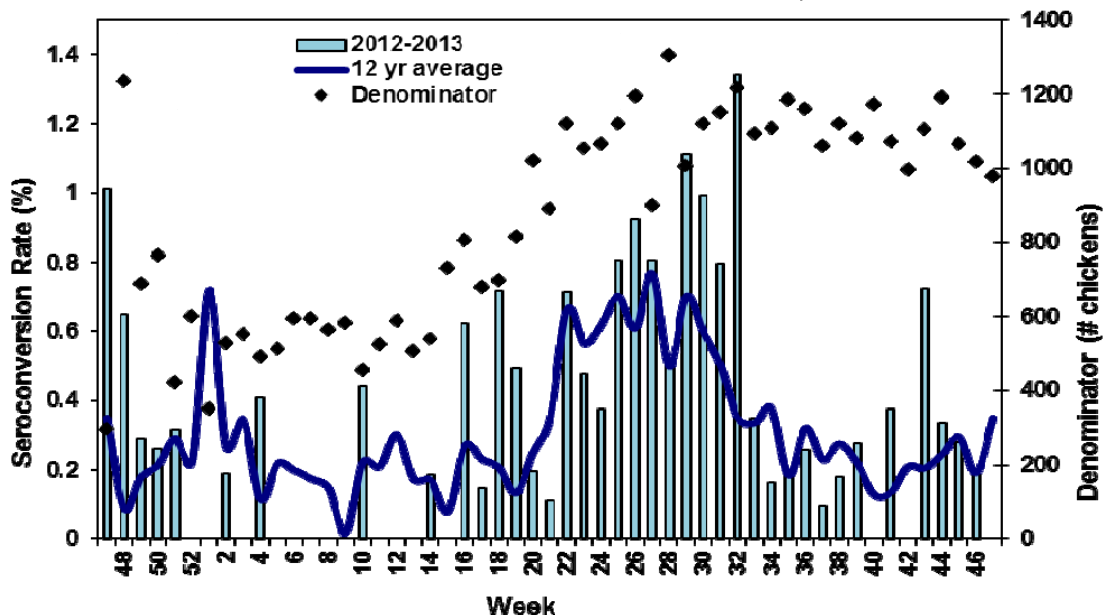
Sentinel Chickens

The table below is for the reporting of confirmatory laboratory results from this week. Some of the samples were collected at earlier dates. The date of collection is recorded for samples collected on that day along with the total number of positives and the corresponding seroconversion rate for the week the sample was collected.

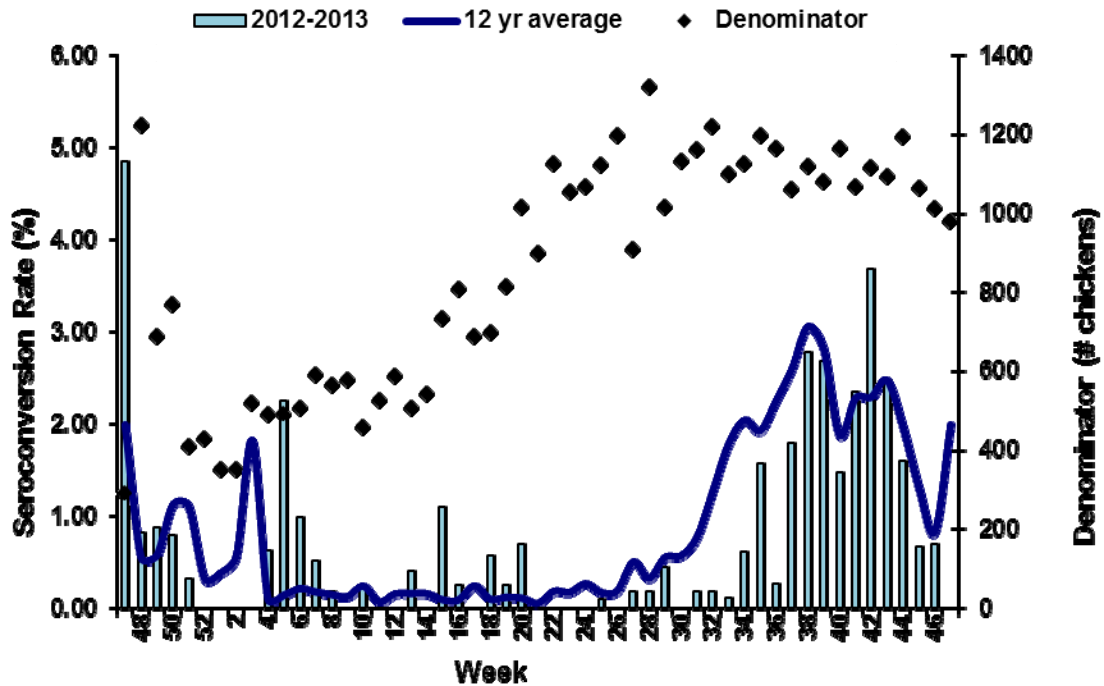
Twenty-one sentinel chickens tested positive for antibodies to WNV in Alachua, Citrus, Duval, Flagler, Indian River, Manatee, Nassau, Orange, St. Johns and Walton Counties this week. Two sentinel chickens tested positive for antibodies to EEEV this week in Hernando and Walton counties. Two sentinel chickens tested positive for antibodies to SLEV this week in Hillsborough and Palm Beach counties.

County	Collection Date	Seroconversion Rates (%)				County Totals	
		SLEV	WNV	EEEV	HJV	Collection Week	YTD
Alachua	10/22/13		20.00			3 WNV	7 EEEV, 15 WNV
Citrus	11/11/13		1.41			1 WNV	6 EEEV, 10 WNV, 2 HJV, 1 SLEV
Duval	10/28/13		9.09			1 WNV	1 EEEV, 24 WNV, 2 HJV
Flagler	10/28/13		8.33			1 WNV	
	11/12/13		8.33			1 WNV	5 EEEV, 8 WNV, 5 HJV
Hernando	11/13/13			20.00		1 EEEV	4 EEEV, 1 WNV
Hillsborough	10/22/13	0.94				1 SLEV	3 WNV, 31 SLEV
Indian River	10/23/13		2.08			1 WNV	2 EEEV, 4 WNV
Manatee	10/29/13		2.82			2 WNV	5 WNV
Nassau	11/12/13		2.86			1 WNV	12 EEEV, 51 WNV, 3 HJV
Orange	11/07/13		0.94			1 WNV	31 EEEV, 1 WNV, 2 HJV
Palm Beach	10/28/13	9.09				2 SLEV	9 SLEV
St. Johns	10/28/13		8.77			5 WNV	
	11/12/13		8.00			4 WNV	24 EEEV, 26 WNV, 4 HJV
Walton	10/22/13		0.88			1 WNV	
	10/28/13		2.46	0.82		3 WNV, 1 EEEV	
	11/12/13			0.88		1 EEEV	54 EEEV, 69 WNV, 11 HJV

Sentinel Seroconversions to EEEV in Florida, 2012-2013



Sentinel Seroconversions to WNV in Florida, 2012-2013



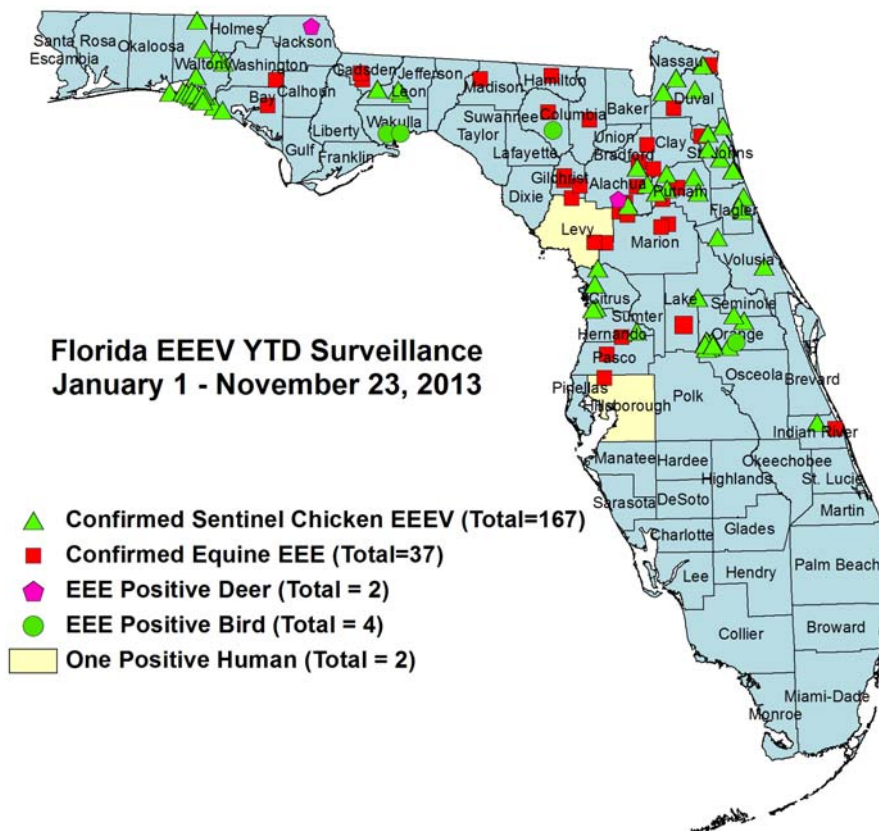
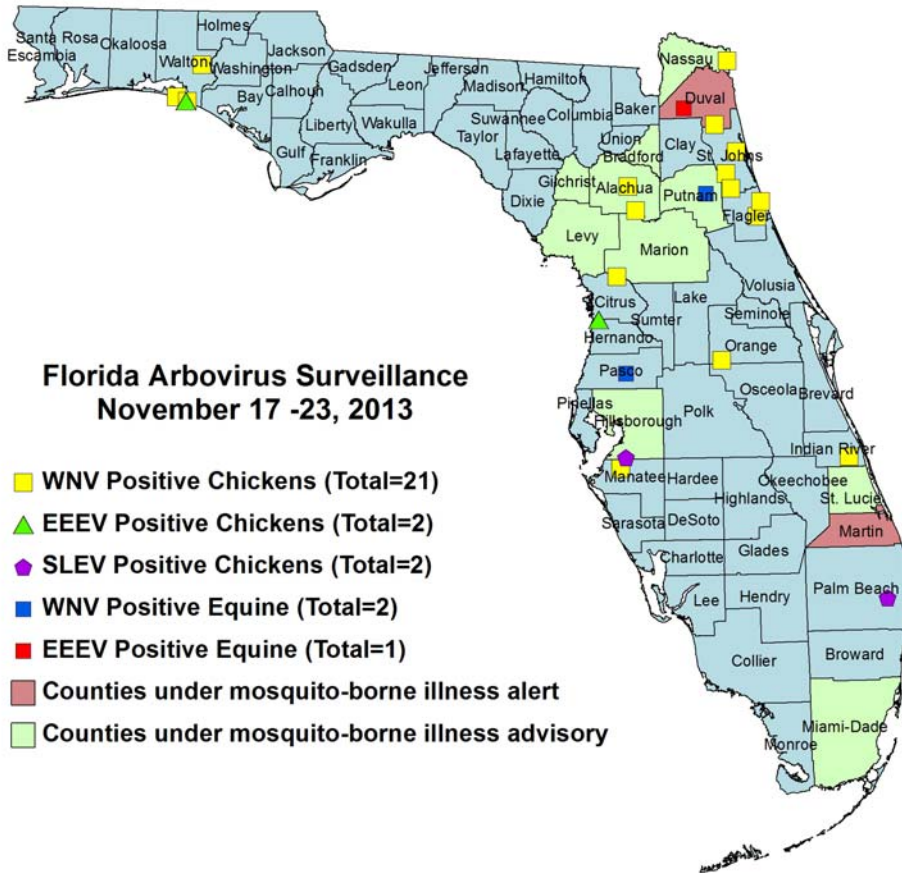
Dead Birds

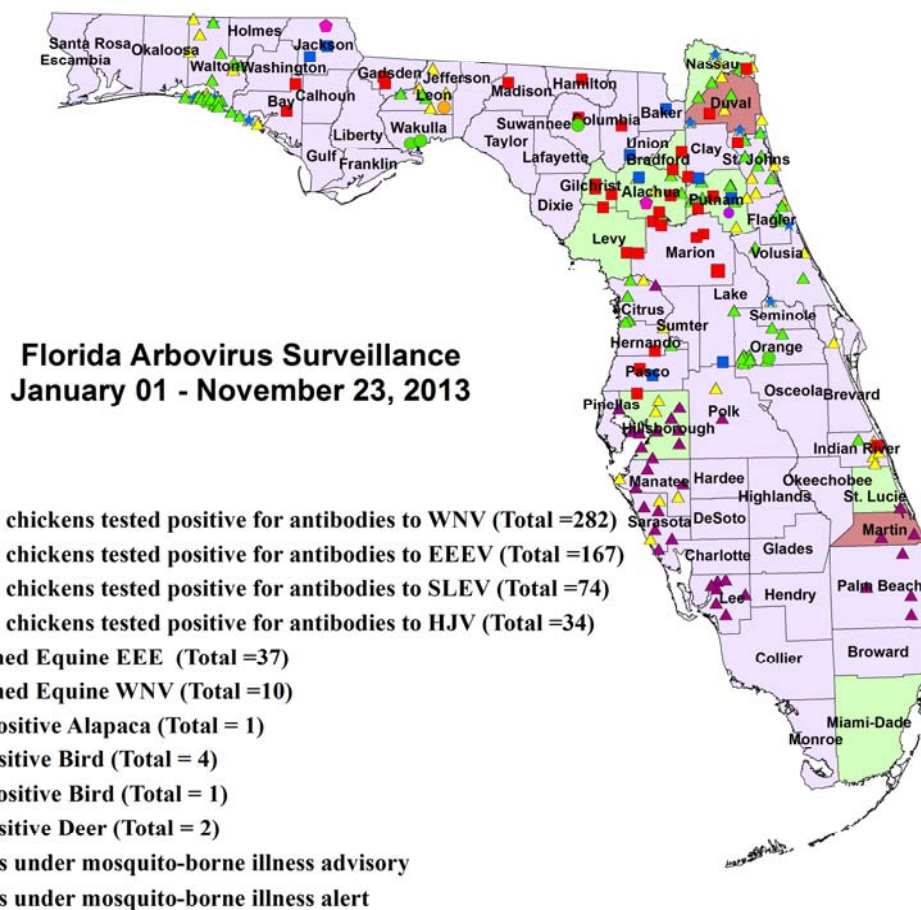
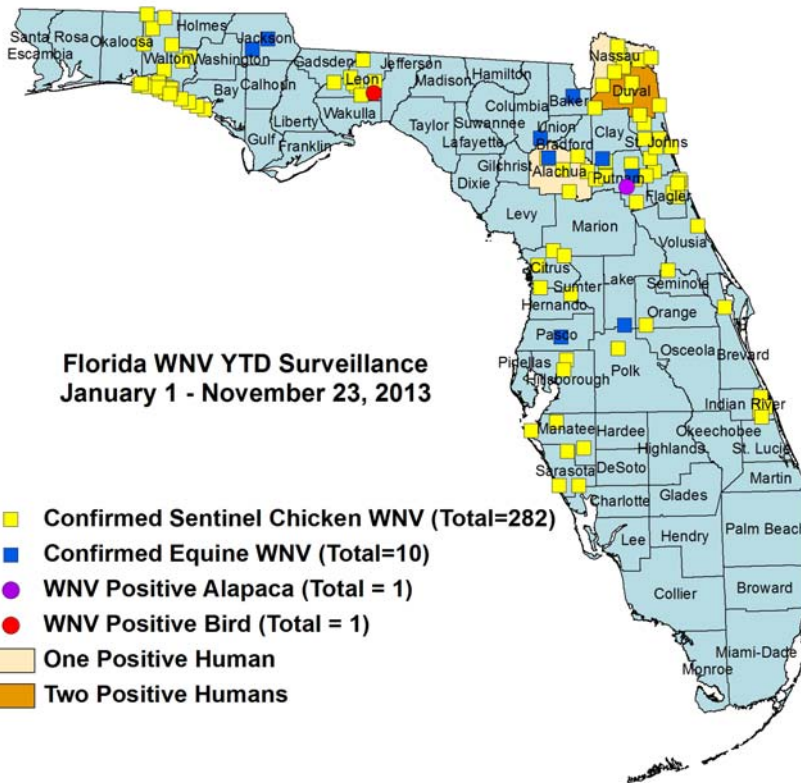
The Fish and Wildlife Conservation Commission (FWC) collects reports of dead birds, which can be an indication of arbovirus circulation in an area. This week, 6 reports representing 27 dead birds, including 2 raptors were received from 5 counties.

In 2013, 610 reports representing a total of 1922 dead birds (30 crows, 21 jays, 118 raptors, 44 doves) were received from 52 of Florida's 67 counties. Please note that FWC collects reports of birds that have died from a variety of causes, not only arboviruses. Dead birds should be reported to www.myfwc.com/bird/

County	Total Dead Birds	Crows	Jays	Raptors	Dove
Brevard	2	0	0	0	0
Duval	2	0	0	0	0
Hillsborough	2	0	0	2	0
Marion	8	0	0	0	0
Pinellas	13	0	0	0	0

Maps





2013 Arbovirus Activity by County

County	Arbovirus Activity
Alachua	EEEV: 2 horses (2/13, 7/11) ; 1 deer (1/1/); 7 sentinels (6/17, 6/24, 7/15, 8/5, 10/7, 11/4) WNV: 1 human (September); 1 horse (10/14); 15 sentinels (7/1, 8/19, 9/16, 9/24, 9/30, 10/22)
Baker	WNV: 1 horse (7/9)
Bay	EEEV: 2 horses (8/21,11/7) 1 sentinel (5/21) WNV: 4 sentinels (5/7, 8/26, 11/4) HJV: 2 sentinels (5/7, 5/28)
Bradford	EEEV: 2 horses (5/27, 5/30)
Brevard	WNV: 1 sentinel (10/18)
Citrus	EEEV: 6 sentinel (4/15, 10/7, 10/21) WNV: 10 sentinels (1/21, 1/28, 9/16, 10/21, 10/28, 11/11) SLEV: 1 sentinel (1/21) HJV: 2 sentinels (3/25, 4/2)
Clay	EEEV: 1 horse (7/17) WNV: 1 horse (8/7)
Columbia	EEEV: 1 horse (5/4) WNV: 1 horse (9/9)
Duval	EEEV: 1 horse (11/9); 1 sentinel (8/22) WNV: 2 Humans (August, October), 24 sentinels (7/1, 7/15, 7/29, 8/26, 8/28, 9/3, 9/10, 9/16, 9/23, 9/30, 10/3, 10/21, 10/28, 11/4) HJV: 2 sentinels (6/17, 7/8)
Flagler	EEEV: 5 sentinels (4/22, 6/24, 7/22, 7/29) WNV: 8 sentinels (8/19, 9/23, 9/30, 10/7, 10/21, 10/28, 11/12) HJV: 5 sentinels (6/17, 7/29, 8/5, 9/3)
Gadsden	EEEV: 2 horses (9/3,11/10)
Gilchrist	EEEV: 4 horses* (2/6, 6/28, 6/29)
Hamilton	EEEV: 1 horse (5/30)
Hernando	EEEV: 1 horse (6/27) ; 4 sentinels (6/10, 10/21. 10/28, 11/13) WNV: 1 sentinel (10/21)
Hillsborough	EEEV: 1 human (March), 1 horse (7/20) WNV: 3 sentinels (10/15, 10/29) SLEV: 31 sentinels (9/3, 9/17, 9/25, 9/30, 10/8, 10/15, 10/18, 10/22)
Indian River	EEEV: 1 horse (9/29), 2 sentinels (5/9, 8/15) WNV: 4 sentinels (7/10, 7/31, 10/10, 10/23)
Jackson	EEEV: 1 deer (10/1) WNV: 2 horses (9/24, 10/25)
Lake	EEEV: 1 horse (1/30) WNV: 1 horse (9/16)
Lee	SLEV: 12 sentinels (9/2, 9/16, 9/30, 10/14, 10/21, 10/29)
Leon	EEEV: 7 sentinels (6/3, 8/5, 8/12, 8/20,11/5) WNV : 20 sentinels (8/27, 9/17, 9/23, 10/1, 10/11, 10/21) ; 1 wild bird (10/1) HJV : 1 sentinel (10/21)
Levy	EEEV : 1 human (January) ; 3 horses (1/7, 7/21, 7/27)
Madison	EEEV : 1 horse (2/16)
Manatee	WNV: 5 sentinel (9/24, 10/1, 10/15, 10/29) SLEV: 5 sentinels (9/17, 9/24, 10/1, 11/5)
Marion	EEEV : 6 horses (7/11, 7/12, 7/18, 7/31, 8/7, 9/10)
Martin	Dengue : 15 humans (June, July, August, September) SLEV : 6 sentinels (9/20, 10/4)
Miami-Dade	Dengue : 1 human (August)
Nassau	EEEV : 1 horse (7/8) ; 12 sentinels (6/8, 6/15, 6/28, 7/1, 7/5, 7/12, 7/19, 7/26, 8/5, 8/10) WNV : 1 Human (September) ; 51 sentinels (7/19, 7/26, 8/3, 8/5, 8/16, 8/23, 8/30, 9/9, 9/13, 9/16, 9/20, 9/23, 9/30, 10/6, 10/7, 10/11, 10/14, 10/18, 10/21, 11/12) HJV : 3 sentinels (6/28, 7/29)

County	Arbovirus Activity
Orange	EEEV : 31 sentinels (5/2, 5/30, 6/6, 6/13, 6/20, 6/24, 6/27, 7/1, 7/3, 7/11, 7/15, 7/23, 8/12, 8/22, 8/26, 9/16, 9/23, 10/24, 10/28, 10/31) ; 1 bird (1/1) WNV : 1 sentinel (11/7) HJV : 2 sentinels (9/5, 9/12)
Palm Beach	SLEV : 9 sentinels (9/3, 9/16, 9/17, 9/30, 10/14, 10/28) Dengue : 1 human with exposure in Martin (August)
Pasco	EEEV : 2 horse (7/16, 11/11) WNV : 1 horse (11/11)
Pinellas	SLEV : 3 sentinels (10/7, 10/14)
Polk	WNV : 2 sentinels (10/15, 11/4) SLEV : 1 sentinel (9/9)
Putnam	EEEV : 3 horses (6/26, 8/8, 10/30) ; 11 sentinels (7/16, 7/23, 7/30, 8/6, 9/10, 9/24, 10/8) WNV : 1 horse (10/30) ; 1 alpaca (10/10) ; 33 sentinels (9/17, 9/24, 10/1, 10/8, 10/15, 10/22, 11/5) HJV : 1 sentinel (9/10)
Sarasota	WNV : 3 sentinels (5/3, 9/10, 11/1) SLEV : 6 sentinels (4/5, 9/20, 9/30, 10/18, 10/28)
Seminole	WNV : 1 sentinel (9/10) HJV : 1 sentinel (5/7)
St. Johns	EEEV : 1 horse (3/1) ; 24 sentinels (4/8, 5/6, 5/28, 6/3, 6/10, 6/17, 6/24, 7/22, 7/29, 8/5, 8/12, 8/26, 9/3) WNV : 26 sentinels (9/3, 9/16, 9/23, 10/7, 10/14, 10/21, 10/28, 11/4, 11/12) HJV : 4 sentinels (6/3, 6/17, 7/1, 9/3)
St. Lucie	Dengue : 4 humans with exposure in Martin (July, August)
Suwannee	EEEV : 1 horse (8/9), 1 bird (8/11)
Volusia	EEEV : 2 sentinels (7/15, 9/3) WNV : 1 sentinel (9/16)
Wakulla	EEEV : 2 birds (4/8)
Walton	EEEV : 54 sentinels (1/7, 2/26, 3/25, 4/15, 4/29, 4/30, 5/6, 5/13, 5/28, 6/17, 6/24, 7/1, 7/8, 7/23, 7/30, 8/5, 8/6, 8/19, 8/26, 8/27, 9/23, 10/28, 11/4, 11/12) WNV : 69 sentinels (1/7, 1/14, 1/15, 1/23, 1/28, 2/4, 2/20, 3/11, 4/8, 4/9, 4/15, 4/29, 4/30, 5/7, 5/13, 5/14, 6/17, 7/8, 8/6, 8/19, 8/26, 9/3, 9/11, 9/16, 9/17, 9/23, 10/1, 10/15, 10/22, 10/28) HJV : 11 sentinels (5/13, 6/17, 7/1, 7/8, 7/29, 8/20)

*The equine listed as Gilchrist/Columbia for 5/29/13 had exposure in both counties during the 2 weeks prior to onset and is not listed in the table above.

Acknowledgements and Data Sources

Contributors: Stephanie Moody-Geissler, MPH, Shaiasia Itwaru-Womack, Danielle Stanek, DVM, and Carina Blackmore, DVM, Ph.D., DOH Bureau of Epidemiology; Lea Heberlein-Larson and Valerie Mock, DOH Bureau of Public Health Laboratories.

For more surveillance information, please see the DOH website at:

<http://www.floridahealth.gov/diseases-and-conditions/mosquito-borne-diseases/surveillance.html>

For arbovirus surveillance information for the United States, please see the Centers for Disease Control and Prevention website at:

<http://www.cdc.gov/ncidod/dvbid/westnile/surv&control.htm>

**Case tallies included in the weekly Florida arbovirus surveillance report include confirmed and probable cases for EEE, WNV infection, SLE, dengue, and malaria. In addition, dengue and malaria tallies may also include suspect cases. Activity is mapped by county of exposure rather than county of residence. Case definitions being used in Florida are consistent with national criteria provided by the Council of State and Territorial

Epidemiologists (CSTE) and may be viewed at: <http://www.floridahealth.gov/diseases-and-conditions/disease-reporting-and-management/disease-reporting-and-surveillance/index.html>

Case tallies reported by CDC do not include suspect cases and cases are reported by patient state of residence rather than where the exposure occurred. Data is provided by county health departments, Department of Health Bureau of Public Health Laboratories, Department of Agriculture and Consumer Services, mosquito control agencies, Florida Fish and Wildlife Conservation Commission, medical providers and veterinarians. Equine cases are provided by the Department of Agriculture and Consumer Services.

***Veterinary table on page 3 was corrected on 11/26/2013.**